

CALL FOR QUOTATIONS/TENDERS :
CONSTRUCTION OF NEW CONVENIENCE ROOM FOR BOYS
AT APS UDHAMPUR

Introduction

1. Army Public School, Udhampur invites offers in **two bids system** from the authorized dealers/vendors for the project "**Construction of new convenience room for Boys at APS Udhampur**".
2. Bids are invited for the project as specified below:-

S No	Details
(a)	Construction of new convenience room for Boys Size – 15 ft x 40 ft

Specification

S. No	Description of Item	Unit	Qty. (approx.)
A.	<u>CIVIL WORK</u>		
1	Earth work in excavation by in foundation trenches or drains. including dressing of sides and ramming of bottoms, and disposal of surplus excavated soil.	Cum	70.00
2	Filling available excavated earth (excluding rock) in trenches, plinth, sides of foundations etc.	Cum	70.00
3	Providing and laying in position cement concrete of specified grade up to plinth level : 1:5:10 (1 cement : 5 coarse sand : 10 graded stone aggregate 40 mm nominal size)	Cum	10.00
4	Making plinth protection 50 mm thick of cement concrete 1:3:6 over 75mm thick bed of dry brick ballast 40 mm nominal size, including finishing the top smooth.	sqm	32.00
5	Reinforced cement concrete work in beams, suspended floors, roofs, chajjas, lintels, stair cases above plinth level up to floor five level, finishing and reinforcement with 1:1.5:3 (1 cement : 1.5 coarse sand: 3 graded stone aggregate 20 mm nominal size).	Cum	6.00
6	Centering and shuttering including strutting, propping etc. and removal of form for : Lintels, beams, plinth beams, roof, cantilevers	sqm	130.00
7	Steel reinforcement for R.C.C. work including straightening, cutting, bending, all complete.	sqm	1050.00
8	Brick work with common bricks of class designation 7.5 in foundation and plinth in: Cement mortar 1:6 (1 cement : 6 coarse sand)	Cum	22.00
9	Brick work with common bricks of class designation 7.5 in superstructure above plinth level in all shapes and sizes in : Cement mortar 1:6 (1 cement : 6 coarse sand)	Cum	32.00
10	Half Brick work with brick in superstructure above plinth level : Cement mortar 1:4 (1 cement : 4 coarse sand)	Cum	118.00
11	12 mm cement plaster of mix : 1:6 (1 cement: 6 fine sand)	sqm	385.00
12	Steel work in built up tubular (round, square or rectangular hollow tubes etc.) trusses etc., including cutting, hoisting, fixing in position and applying a priming coat of approved steel primer, including welding and bolted with special shaped washers etc. complete. Hot finished welded type tubes	Kg	2700.00

13	Providing and fixing precoated galvanised iron profile sheets (size, shape and pitch of corrugation as approved by Engineer-in-charge) 0.50 mm (+ 0.05 %) total coated thickness with zinc coating 120 grams per sqm as per IS: 277, The sheet shall be fixed using self drilling /self tapping screws of size (5.5x 55 mm) with EPDM seal, complete upto any pitch in horizontal/ vertical or curved surfaces, excluding the cost of purlins, rafters and trusses and including cutting to size and shape wherever required.	sqm	95.00
14	Providing and applying white cement based putty of average thickness 1 mm, over the plastered wall surface even and smooth complete.	sqm	82.00
15	Distempering with oil bound washable distemper of approved brand and manufacture to give an even shade : New work (two or more coats) over and including water thinnable priming coat with cement primer	sqm	82.00
16	Providing and fixing 18 mm thick gang saw cut, mirror polished granite of required size, approved shade, colour and texture laid over 20 mm thick base cement mortar 1:4 (1 cement : 4 coarse sand), joints treated with white cement, including rubbing, curing, moulding and polishing to edges to give high gloss finish etc. complete	sqm	6.00
17	Extra for providing opening of required size & shape for wash basin in platform, vanity counter and similar location in Granite stone work, including necessary holes for pillar taps etc. including moulding, rubbing and polishing of cut edges etc. complete.	each	4.00
18	Stone tile work for wall lining upto 10 m height with special adhesive over 12 mm thick bed of cement mortar 1:3 (1 cement : 3 coarse sand), the stone shade 8mm thick (mirror polished and machine cut edge) Granite stone of any colour and shade.	sqm	130.00
19	Providing and laying Vitrified tiles in floor in different sizes, of approved brand & manufacturer, in all colours and shade, laid on 20 mm thick cement mortar 1:4 (1 cement: 4 coarse sand) jointing with grey cement including grouting the joints with white cement and matching pigments etc. glazed Vitrified tiles Matt/Antiskid finish of size of Tile 600 x 600 mm	sqm	65.00
20	Providing and fixing 1st quality ceramic glazed digital wall tiles (600x300 mm) of approved make, in all colours, shades any size as approved by APS, in skirting, risers of steps and dados, over 12 mm thick bed of cement mortar 1:3 (1 cement : 3coarse sand) and jointing with grey cement, complete.	sqm	280.00
21	Providing and laying matt finished vitrified tile of size 300x300x9.8mm of approved make in all colours and shades in for outdoor floors such as footpath, court yard, multi modals location etc.,laid on 20mm thick base of cement mortar 1:4 (1 cement : 4 coarse sand) in all shapes & patterns including grouting the joints matching pigments etc. complete.	sqm	9.00
22	Providing and fixing on wall face unplasticized Rigid PVC rain water pipes, including jointing with seal leaving 10 mm gap for thermal expansion, Single socketed pipes. 110 mm dia	Mtr.	42.00
23	Providing and fixing on wall face unplasticized - PVC bend moulded fittings/ accessories for unplasticized, including jointing with seal ring bend-110 mm	Nos	12.00
24	Providing and fixing aluminum work for doors, windows, ventilators and partitions with extruded built up standard tubular sections and other sections of approved make, fixing with dash fasteners of required dia and size, including necessary filling up the gaps at junctions, i.e. at top, bottom and sides with required EPDM rubber/ neoprene gasket etc. Aluminum snap beading for glazing / paneling, C.P. brass / stainless steel screws, all complete as per architectural drawings and the directions. For fixed portion and openable door frame & shutter etc.	kg	450.00
25	Providing and fixing glazing with single glass panes of 5.50 mm thickness in aluminum door, window, ventilator shutters and partitions etc. with EPDM rubber / neoprene gasket etc. complete as per the architectural drawings and the directions of engineer-in-charge .	Sqm	15.00
26	Providing and fixing ACP sheet 3mm thick in aluminum door, window, ventilator shutters and partitions etc. with EPDM rubber / neoprene gasket etc. complete as per the architectural drawings and the directions of engineer-in-charge.	sqm	12.00
27	Providing and fixing aluminum sliding door bolts, size 300x 16mm, ISI marked anodized anodic coating, transparent or dyed to required colour or shade, with nuts and screws etc. complete :	Nos	2.00

28	Providing and fixing 100mm brass locks (best make of approved quality) for aluminum doors including necessary cutting and making good etc. complete.	Nos	2.00
29	Providing and fixing aluminum tower bolts, size 200x10mm, ISI marked, anodized transparent or dyed to required color or shade, with necessary screws etc. complete :	Nos	10.00
30	Providing and fixing aluminum handles, size 150 mm ISI marked, anodized transparent or dyed to required colour or shade, with necessary screws etc. complete :	Nos	12.00
31	Providing and fixing aluminum hanging twin rubber floor door stopper, anodised transparent or dyed to required colour and shade, with necessary screws etc. complete.	Nos	4.00
32	Providing and fixing aluminum die cast body tubular type universal hydraulic door closer (having brand logo with ISI, IS : 3564, embossed on the body, door weight upto 35 kg and door width upto 700 mm), with necessary accessories and screws etc. complete.	Nos	2.00
33	Providing and fixing stainless steel (Grade 304) railing made of Hollow tubes, channels, plates etc., including welding, grinding, buffing, polishing necessary stainless steel nuts and bolts complete, i/c fixing the railing with necessary accessories f required size, on the top of the floor or the side with suitable arrangement as per approval of Engineer-in charge,	kg	175.00
34	Providing and fixing white Vitreous china Orissa pattern (Indian type W.C. pan) with 100 mm sand cast Iron P or S trap, 10 litre low level white P.V.C. flushing cistern, including flush pipe, with manually controlled device (handle lever) with all fittings and fixtures complete, including cutting and making good the walls and floors wherever required: 580x440 mm with integral type foot rests	Nos	2.00
35	Providing and fixing floor mounted, white vitreous china single piece, double traps syphonic water closet of approved brand/make, shape, size and pattern including integrated white vitreous china cistern of capacity 10 litres with dual flushing system, including all fittings and fixtures with seat cover, cistern fittings, nuts, bolts and gasket etc including making connection with the existing P/S trap, complete inall respect as per directions of Engineer-in-Charge	Nos	2.00
36	Providing and fixing white vitreous china battery based infrared sensor operated urinal of approx. size 610 x 390 x 370 mm having pre & post flushing with water (250 ml & 500 ml consumption), having water inlet from back side, including fixing to wall with suitable brackets all as per manufacturers specification and direction of Engineer-in-charge.	Nos	20.00
37	Providing and fixing white Vitreous China obel type Wash basin size 630x450 mm with a pair of 15 mm C.P. brass pillar taps wash basin with C.I. brackets, 15 mm C.P. brass pillar taps, 32 mm C.P. brass waste of standard pattern, including painting of fittings and brackets, cutting and making good the walls wherever require:	Nos	4.00
38	Providing and fixing 8 mm dia C.P. / S.S. Jet with flexible tube upto 1 metre long with S.S. triangular plate to European type W.C. of quality and make as approved by Engineer - in - charge.	Nos	2.00
39	Providing and fixing CP Brass 32mm size Bottle Trap of approved quality & make and as per the direction of Engineer-in-charge	Nos	4.00
40	Providing & Fixing CP brass grating - 100mm dia of weight not less than 100 gm, complete in all respect.	Nos	12.00
41	Providing and fixing specially designed superior quality fancy 6 mm thick looking mirror with backing and frame, size approx 900x1200 mm (Grey or pink colour in imported crystal glass) fixed to rawl plugs with CP brass screws complete in all respect as per direction of Engineer in Charge	Nos	7.00
42	Providing & Fixing C.P. brass toilet paper holder (Jaquar - make or Equivalent) fixed to rawl plugs with CP brass screws.	Nos	2.00
43	Providing & Fixing C.P. brass towel rail 600 mm size, complete (Jaquar - Make or Equivalent).of approved quality including fixing with dash fastener drilling etc. complete	Nos	2.00
44	Providing & Fixing C.P. brass towel Ring 300 mm dia size, complete (Jaquar - Make or Equivalent).of approved quality including fixing with dash fastener drilling etc. complete	Nos	2.00
45	Providing & Fixing CP hand Spray of Jaquar make or equivalent with 8mm dia 1m long PVC tube of approved brand as per direction of Engineer-in-charge.	Nos	2.00

46	Providing and fixing C.P. brass long nose bib cock of approved quality conforming to IS standards and weighing not less than 810 gms. 15 mm nominal bore	Nos	4.00
47	Providing & Fixing C.P. brass angle valve of standard design (Jaquar - Make or Equivalent) - 15 mm nominal bore	Nos	10.00
48	Providing & Fixing CP Concealed stop cock extra heavy body with adjustable wall flange size 15mm of Jaquar make or equivalent	Nos	24.00
49	Providing & Fixing CP brass Cup - 75mm dia of weight not less than 50 gm, complete in all respect complete with all respect.	Nos	42.00
50	Providing & Fixing CP shop container extra heavy body with adjustable wall flange , size 200 mm of Jaquar make or equivalent	Nos	4.00
51	Providing & Fixing electric power hand dryer heavy body with adjustable wall flange , size 400 mm of Jaquar make or equivalent	Nos	2.00
52	Providing and fixing PVC heavy duty drain pipe pitting for toilet seat, wash basin, and urinal system , including jointing with seal ring , Single socketed pipes, bend floor trap 3" and 4"	Mtr.	72.00
53	Providing and laying cement concrete 1:5:10 (1 cement : 5 coarse sand : 10 graded stone aggregate 40 mm nominal size) up to haunches of 110 mm PVC pipes including bed concrete as per standard design :	Mtr.	65.00
54	Providing and fixing (CPVC) pipes, water supply including all CPVC plain & brass threaded fittings This includes jointing of pipes & fittings with one step CPVC solvent cement, trenching, refilling & testing of joints complete 15 and 20 mm	Mtr.	240.00
55	Providing and fixing square-mouth S.W. gully trap class SP-1 complete with C.I. grating brick masonry chamber with water tight C.I. cover with frame of 300 x300 mm size (inside) the weight of cover to be not less than 4.50 kg and frame to be not less than 2.70 kg as per standard design: 100x100 mm size P type With common burnt clay F.P.S. (non modular) bricks of class designation 7.5	Nos	4.00
56	Constructing brick masonry manhole in cement mortar 1:4 (1cement : 4 coarse sand) with R.C.C. top slab with 1:1.5:3 mix (1cement : 1.5 coarse sand (zone-III) : 3 graded stone aggregate 20 mm nominal size), foundation concrete 1:4:8 mix (1 cement : 4 coarse sand (zone-III) : 8 graded stone aggregate 40 mm nominal size), inside plastering 12 mm thick with cement mortar 1:3 (1 cement : 3 coarse sand) finished with floating coat of neat cement and making channels in cement concrete 1:2:4 (1 cement : 2 coarse sand : 4 graded stone aggregate 20 mm nominal size) finished with a floating coat of neat cement complete as per standard design : Inside size 90x80 cm and 45 cm deep including C.I. cover with frame (light duty) 455x610 mm internal dimensions, total weight of cover and frame to be not less than 38 kg (weight of cover 23 kg and weight of frame 15 kg) :	Nos	2.00
57	Supply and fixing 2000 lit cap. PVC water tank and complete fitting.	lit	2000.00
58	Supply & fixing under ground three layer PVC septic tank 2500 lit capacity Size(6 x 4 5 ft) with complete setup	Nos	1.00
59	Making soak pit 2.5 m diameter 3.0 metre deep with 45 x 45 cm dry brick honey comb shaft with bricks and S.W. drain pipe 100 mm diameter, 1.8 m long complete as per standard design. with common burnt clay F.P.S. (non modular) bricks of class designation 7.5	Nos	1.00
60	Providing and fixing tiled false ceiling of approved materials of size 595x595 mm in true horizontal level, suspended on inter locking metal grid of hot dipped galvanized steel sections (galvanized @ 120 grams/ sqm, both side inclusive) consisting of main "T" runner with suitably spaced joints to get required length and of size 24x38 mm made from 0.30 mm thick (minimum) sheet, spaced at 1200 mm center to center and cross "T" of size 24x25 mm made of 0.30 mm thick (minimum)sheet, 1200 mm long spaced between main "T" at 600 mm center to center to form a grid of 1200x600 mm and secondary cross "T" of length 600 mm and size 24x25 mm made of 0.30 mm thick (minimum) sheet to be interlocked at middle of the 1200x600 mm panel to form grids of 600x600 mm and wall angle of size 24x24x0.3 mm all complete for all heights as per specifications, drawings. 12.5 mm thick square edge PVC Laminated Gypsum Tile of size 595x595 mm, made of Gypsum plasterboard, manufactured from natural gypsum as per IS 2095 part I and laminated with white 0.16mm thick fire retardant PVC film on the face side and 12micron metalized polyester on the back side with all edges sealed with the face side PVC film which goes around and wraps the edges and is bonded to the edges and the back side metalized polyester film so as to make the tile a completely sealed unit.	sqm	65.00

61	Fabrication & fixing of letters 250 mm height in English "BOYS WASH ROOM" made with mirror finished stainless steel plates complete	L.s	1.00
B	ELECTRICAL WORK		
1	Wiring for light point/ fan point/ exhaust fan point/ call bell point with 1.5 sq.mm FR PVC insulated copper conductor single core cable in surface / recessed medium class PVC conduit, with modular type switch, phenolic laminated sheet, suitable size G.I. box and earthing the point with 1.5 sq.mm. FR PVC insulated copper conductor single core cable etc as required.		
	Group C	Point	14.00
2	Wiring in existing conduit: Supply and drawing following sizes of FR PVC insulated copper conductor, single core cable in surface/ recessed steel/ PVC conduit as required.		
A	2 x 1.5 sq.mm + 1 x 1.5 sq. mm earth wire	mtr.	60.0
B	2 x 2.5 sq.mm + 1 x 2.5 sq. mm earth wire	mtr.	60.0
3	Supplying and fixing of following sizes of medium class PVC conduit along with accessories in surface/recess including cutting the wall and making good the same in case of recessed conduit as required.		
A	20 mm (2mm thick)	mtr.	40.0
B	25 mm (2mm thick)	mtr.	40.0
4	Supplying and fixing metal box of following sizes (nominal size) on surface or in recess with suitable size of phenolic laminated sheet cover in front including painting etc as required.		
A	100 mm X 150 mm X 60 mm deep	Nos	2.00
B	200 mm X 250 mm X 60 mm deep	Nos	2.00
5	Supplying and fixing following Piano type switch/ socket on the existing Switch box/ cover including connections etc. as required.		
A	5/6 amps switch	Nos	8.0
B	15/16 amps switch	Nos	2.0
C	3 pin 5/6 amps socket outlet	Nos	4.0
D	6 pin 15/16 amps socket outlet	Nos	4.0
6	Supplying and fixing 3 pin, 5 amp ceiling rose on the existing junction box/ wooden block including connection etc. as required.	Nos	4.00
7	Supplying and fixing following way, single pole and neutral, sheet steel, MCB distribution board, 240 volts, on surface/ recess, complete with tinned copper bus bar, neutral bus bar, earth bar, din bar, interconnections, powder painted including earthing etc.as required. (But without MCB/RCCB/Isolator)		
B	2 + 6 way / 8 way Double door	Nos	1.00
8	Supplying and fixing 5 amps to 32 amps rating, 240/415 volts, "C" curve, miniature circuit breaker suitable for inductive load of following poles in the existing MCB DB complete with connections, testing and commissioning etc. as required.		
A	Single pole	Nos	4.0
B	Single pole and neutral	Nos	2.0
C	Double pole	Nos	2.0
D	Triple pole	Nos	1.0
9	Supplying and fixing of Exhaust Fans 12 inches with Louvers	Nos	2.0
10	Supplying and fixing of 2'x2' 36 watt LED false Ceiling light	Nos	10.0
11	Supplying and fixing of 4 ft LED tube light	Nos	2.0

"The work shall be carried out strictly according to lasted CPWD Specifications and IS code in confirmation to I.E rules."

Approved Material to be used

S. No	Materials	Approved Make / Manufactures
1.	Cement	ACC, Ambuja, Birla, Bangur L&T, Ultra-Tech. Shree-Ultra,
2.	CP Brass Sanitary fittings/ Accessories	Jaquar/Cera/Prayag
3.	Orissa Pan, W.C, Vitreous and wash basin, Urinal etc.	Hindware, Orient, Cera, Paryware
4.	Ceramic Tiles/ Vitrified Tiles	Kajaria, Nitco, Orient, Somany, Jonhson
5.	Mild steel Bar / TMT bar/ Angle Iron	SAIL, TATA, RINL, Jindal, Kamdhnu
6.	Cast Iron Pipes & Fittings Manhole Covers and Frames	Bajaj, MES, NECO, BIC Calcutta, Kajeco,
7.	M. S. Pipe & accessories	TATA, SAIL, RINL, Jindal
8.	G. I. Pipe & accessories	Jindal, Prakash surya, TATA
9.	G. I Fitting	UNIK, DRP-M, KENT, ZOLOTO-M
10.	Gate/ wheel valve/ Gun metal valves	Leader, DRP, ZOLOTO
11.	OBD, emulsion, Primer synthetic Paint materials etc.	Asian, Nerolac, Dulux
12.	Pre-Coated iron Galvanized profile sheet and accessories	Lioydeck, Trackdeck, Multiclad, TATA Bluescope
13.	PTMT fitting	Prayag, Praksh Surya, Hindware, Cera, Parryware
14.	18mm/12mm/6mm /4mm Ply Board	Confore, Garnix, Century, Douro
15.	Mica	Mirrino, Greenlam, Kitlam
16.	Water Storage Tank	Sintex (Tripal Layer)
17.	Looking mirror	Atul/Modi auard/Saint Gobian

LIST OF APPROVED MAKES (ELECTRICALS WORKS)

S.No	Materials	Approved Make / Manufactures
1	Flexible Copper wires	Finolex/ Havell's/ Polycab wires / Shalimar (FR)
2	Switch & Sockets	Legrand/ Anchor/ Havells/ ABB
3	Distribution board	Legrand/ Hager/ Havell's
4	MCCB, MCB, RCCB	Legrand/ Hager/ Havell's/ L&T.
5	Casing caping/Conduit	Berlia/ Polypack/ Pestoplast/ Richa / Setia (2 mm)
6.	Exhaust fan	Bajaj/ Crompton Greaves/ Havells/ Usha/Orient
7.	Lighting fixture	Phillips/ Bajaj/ Crompton/Havells/Wipro
8.	Ceiling fan	Bajaj/ Crompton Greaves/ Havells/ Usha/Orient
9.	BUS BARS / Panels	CPRI Approved
10.	Cables	Armoured/ Havells / Polycab/ (ISI Approved)

Note	
1.	Choice of selection materials to be used in work out of the approved list shall remain with School management.
2.	The work shall be carried out strictly according to lasted CPWD Specification and in confirmation to I. E. rules.
3.	Layout of Convenience room is attached for reference.

Note :- Interested bidders must visit the site and check scope of work physically for any query before quoting their bids.

3. **Eligibility criteria**

Technical Bid :

- (a) Technical Specification and Brand should be attached.
- (b) GST Registration Certificate.
- (c) Latest Qtr/month GST return should be attached.
- (d) PAN Card Copy should be attached.
- (e) Last one year IT return should be attached.
- (f) Experience Certificate in the field of the tender.
- (g) EMD / Submit MSME Certificate.

Commercial Bid

- (a) Prices of the items should be inclusive of GST.
- (b) However, quoted price should include cost of material, transportation, installation and labour charges incurred to make the items functional in the school premises.
- (c) Any variation in warranty period other than specified in Para 13 of this Call for Quotation should invariably highlighted separately.

4. **Sample envelope for sending Technical Bid & Commercial Bid is attach along with RFP.** Technical Bid and Commercial Bid given above need to be sealed in two separate envelopes and these two bids put in a single envelope and write on top of the single envelope **“Technical and Commercial Bids inside in this envelope”**.

Technical Bid और Commercial Bid दो अलग- अलग लिफाफे में रखकर, एक बड़े लिफाफे में डालें और उस बड़े लिफाफे पर लिखें :-

“Technical Bid and Commercial Bid Inside in this envelope”

5. Bids in sealed cover are invited for **“Construction of new convenience room for Boys at APS Udhampur”**. The vendors/ dealers having proper valid GST Number may submit their bids. Please super scribe “_____ (type of bid) **“Construction of new convenience room for Boys at APS Udhampur”**. RFP number i.e 1058/APSU and date of opening of the bids i.e. **30 Jan 2024** on the sealed cover to avoid the bid being declared invalid.

6. (a) Last date for submission of bids by **1500 hrs on 29 Jan 2024**. The sealed bids should be reached by the due date and time. The responsibility to ensure this lies with the bidder. Bids received beyond the time and date given above shall be rejected.
- (b) **Manner of depositing the bids:** Sealed bids should be sent by **Registered Post / Courier only** at the address mentioned in **Para 20 below** so as to reach by the due date and time. No responsibility will be taken for postal delay or non delivery/ non receipt of bid documents. Bids sent by FAX or e-mail or deposit by himself in Tender Box will not be considered (unless the latter has been specifically called for by these modes due to urgency).
- (c) **Time and date for opening of bids :** **30 Jan 2024 at 1000 hrs at APS, Primary Wing, Udhampur** onwards. (if due to any exigency, the due date for opening of the bids is declared closed holiday, the bids will be opened on the next working day at the same time or on any other day/time.
- (d) **Earnest Money Deposit:** Bidders are required to submit Earnest Money Deposit (EMD) of **Rs 24,000/-** in the name of Principal, APS Udhampur along with their **technical bid/ submit MSME Cert only**. The EMD should be submitted in the form of Fixed Deposit Receipt (FDR), Call Deposit Receipt (CDR) or cheque from any of the public sector banks or a private sector bank authorized to conduct government business.
- (e) **Technical Bid received without EMD / MSME Cert will be rejected.**

Special conditions

7. **Payment Terms**: It will be mandatory for the bidders to indicate their Bank Account numbers and other relevant e-payment details so that payments could be made through ECS/EFT mechanism instead of payment through cheques. Where feasible.
8. **Full payments shall be made on completion of the full order as specified**, after inspection and acceptance of items for quality, completeness and serviceability by the Board detailed by the purchaser. Payment will be made for the complete order and not in parts.
9. Payment would be made through interbank transfer once the Acceptance has been issued by BOO after receipt, installation and commissioning of stores at loc which will be given in Supply Order. No advance payment is admissible.
10. **Paying Authority** : Army Public School, Udhampur after prior approval of Competent Financial authority.
11. **Quality**: The quality of the stores delivered according to the present Contract shall correspond to the technical conditions and standards valid for the deliveries of the same stores or specifications enumerated as per RFP and shall also include therein Modification to the stores suggested by the Buyer. Such modifications will be mutually agreed to. The Seller shall supply an interchangeability certificate along with the changed part numbers wherein it should be mentioned that item would provide as much life as the original item.
12. **Inspection Authority** : The inspection will be carried out by bd of Officers detailed by the school management.
13. **Warranty** : The Seller will provide free comprehensive warranty for a period of minimum **10 years** from the date of acceptance of stores by the bd of officers detailed by the school management or date of installation and commissioning, whichever is later that the goods/stores supplied under the contract and each component used in the manufacture thereof shall be free from all types of defects/failures. During warranty period the vendor shall repair/replace without extra cost any equipment/part/accessory that becomes except defective items of a consumable nature.
14. **Liquidated Damages**: Liquidated Damages (LD), if the Seller fails to deliver the stores in full, within the stipulated period from the date of the supply/installation order, he shall pay the CUSTOMER liquidated damages, at the rate of one percent (1%) of the total value of the supply order for each completed week or part there of up to a maximum of ten percent (10%) of the value of undelivered stores of supply/installation order. This payment will be made through demand draft or MRO in favour of Principal Army Public School, Udhampur. Thereafter the CUSTOMER will have right to terminate the supply order in the case of such delay beyond 10 weeks and the customer would have the option to buy the items and accessories from the market at the vendors risk and cost. The mode of risk purchase would be the total discretion of the customer i.e. Principal Army Public School, Udhampur.

General.

15. **Jurisdiction**. The Court of the place from where the acceptance of tender has been issued shall alone have jurisdiction to decide any dispute arising in respect of the contract.
16. No Litigation/Arbitration under any circumstances at any stage is applicable, the decision of Principal/ Mgt Body of Army Public School, Udhampur will be final and binding in all respect.
17. **Ownership Title**: The ownership of all the items being supplied will be with Principal Army Public School, Udhampur. All document and registration details to this effect will be handed over by the vendor at the time of delivery.
18. **Manual and Literature**. All related manuals, literature and Test certificate for the items supplied will also be handed over with the equipment.
19. No insurance charges will be paid by the school. Consignee accept no responsibility of liability for the loss of damage of the storage in transit of the rejected stores lying inside the school premises for reasons whatsoever.

20. The address and contact numbers for sending bids or seeking clarifications regarding this RFP are given below :-

(a) Postal Address :-

**Coordinator
Army Public School
Primary Wing, Udhampur
PO - Garhi
Tehsil & Dist - Udhampur
Pin - 182121
Jammu & Kashmir**

(b) Telephone number : **01992-295370** & Mobile : **9596881756**

(c) E-mail id: **apsudhpurchase@gmail.com**


21. No boarding and lodging for the installation team will be provided inside School premises due to security reasons.

22. This RFP is being issued with no financial commitment and the customer reserves the right to change or vary any part thereof at any stage. Buyer also reserves the right to withdraw the RFP, should it become necessary at any stage.

23. **10% of the tender amount will be retained by the school as security of defect liability which will be released after defect liability period of one year. This amount will either be deducted from tendered amount or the L-1 vendor may be asked to deposit the same in the shape of FDR pledged to the school before making the payment.**

24. Income tax payment will be vendor's liability.

Yours faithfully,


**(Reena Sharma)
Offg Principal**

SAMPLE ENVELOPE

TECHNICAL AND COMMERCIAL BIDS INSIDE IN THIS ENVELOPE

“Construction of new convenience room for Boys at APS Udhampur”

RFP No : 1058/APSU

Date of Opening – 30 Jan 2024

**Coordinator
Army Public School
Primary Wing, Udhampur
PO - Garhi
Tehsil & Dist - Udhampur
Pin – 182121
Jammu & Kashmir**

Write Address on
Big Envelope

Sender Address

TECHNICAL BID

“Construction of new convenience room for Boys at APS Udhampur”

Technical Bid
Envelope

Sender Address

COMMERCIAL BID

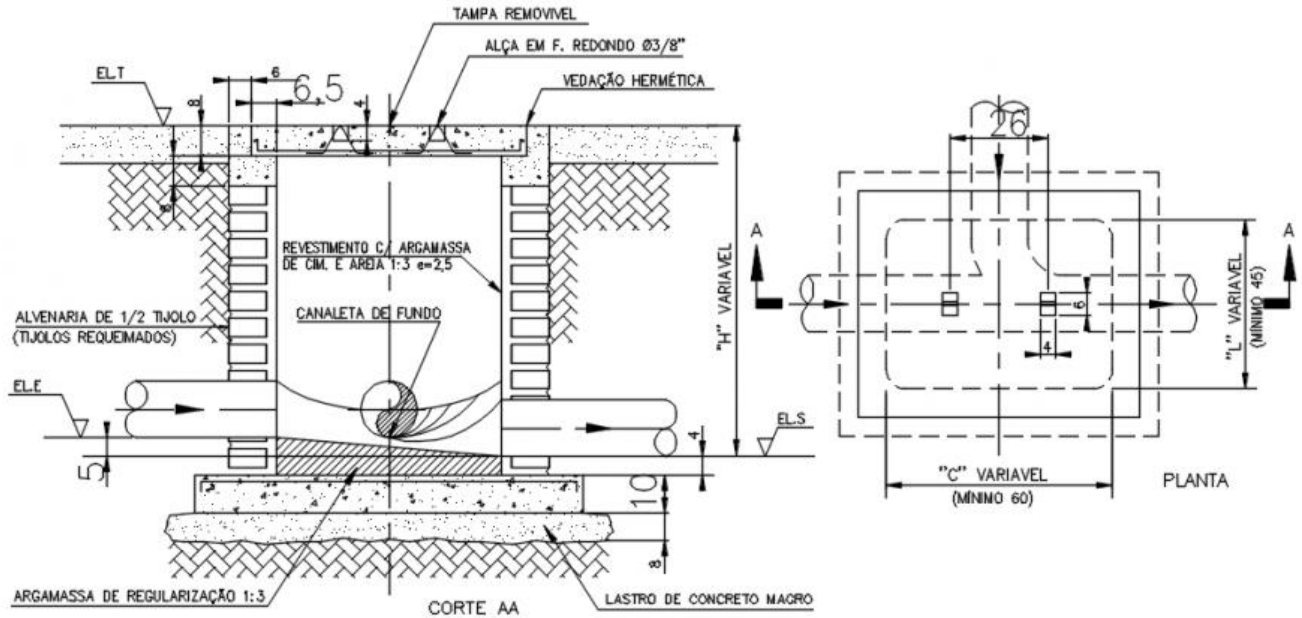
“Construction of new convenience room for Boys at APS Udhampur”

Commercial
Bid Envelope

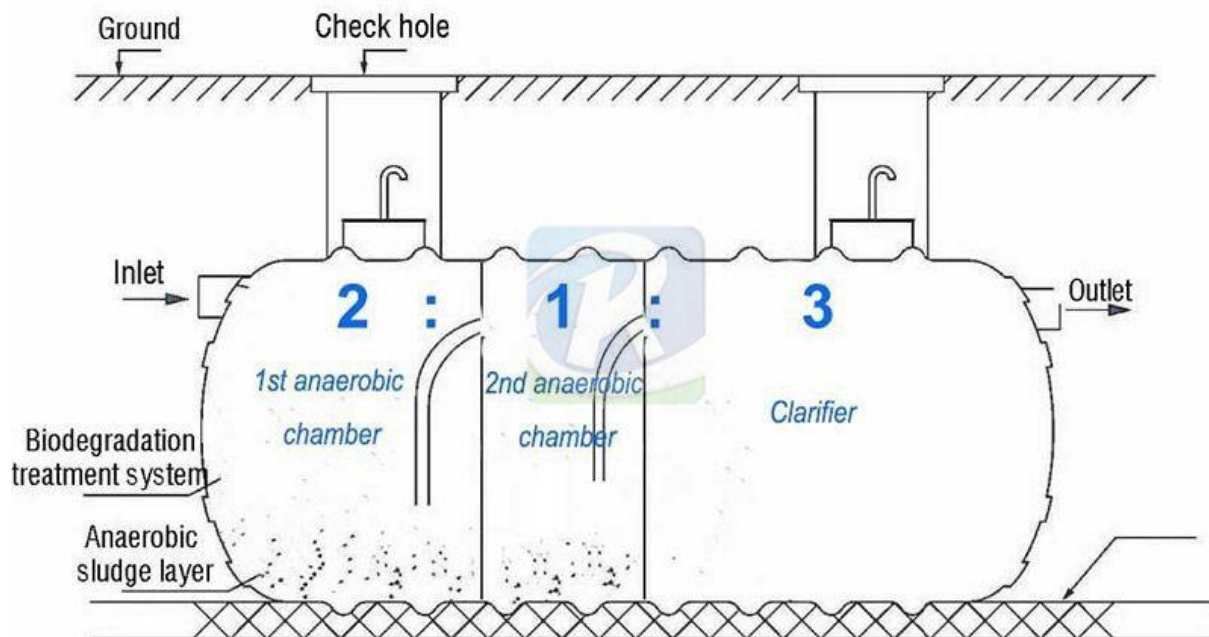
Sender Address

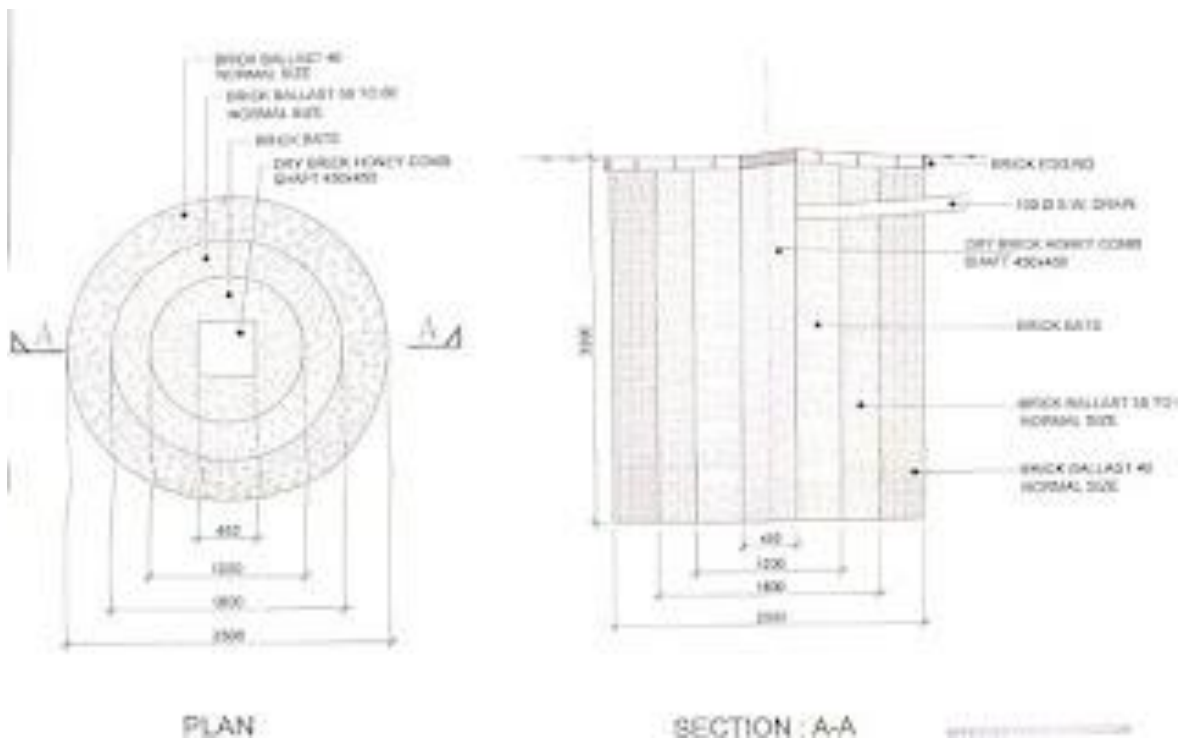
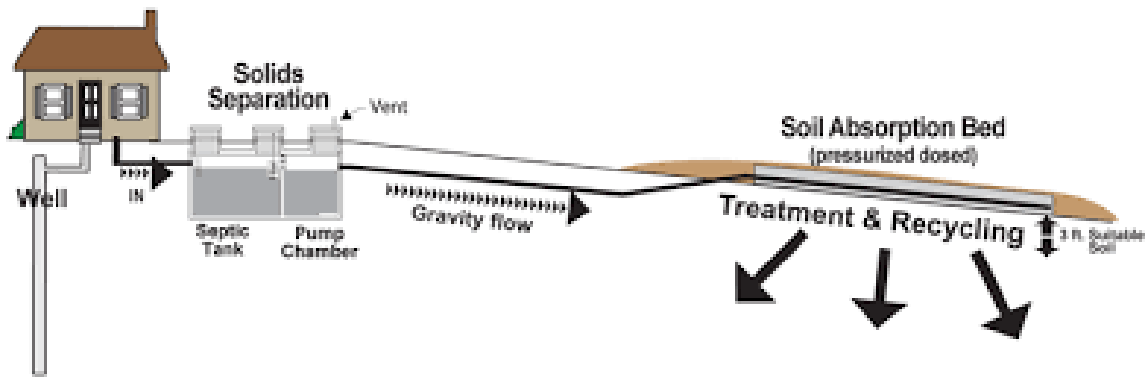
Septic Tank, Soke Pit, Manhole Detail:-

Manhole Design



PVC Septic Tank & Soak Pit Detail

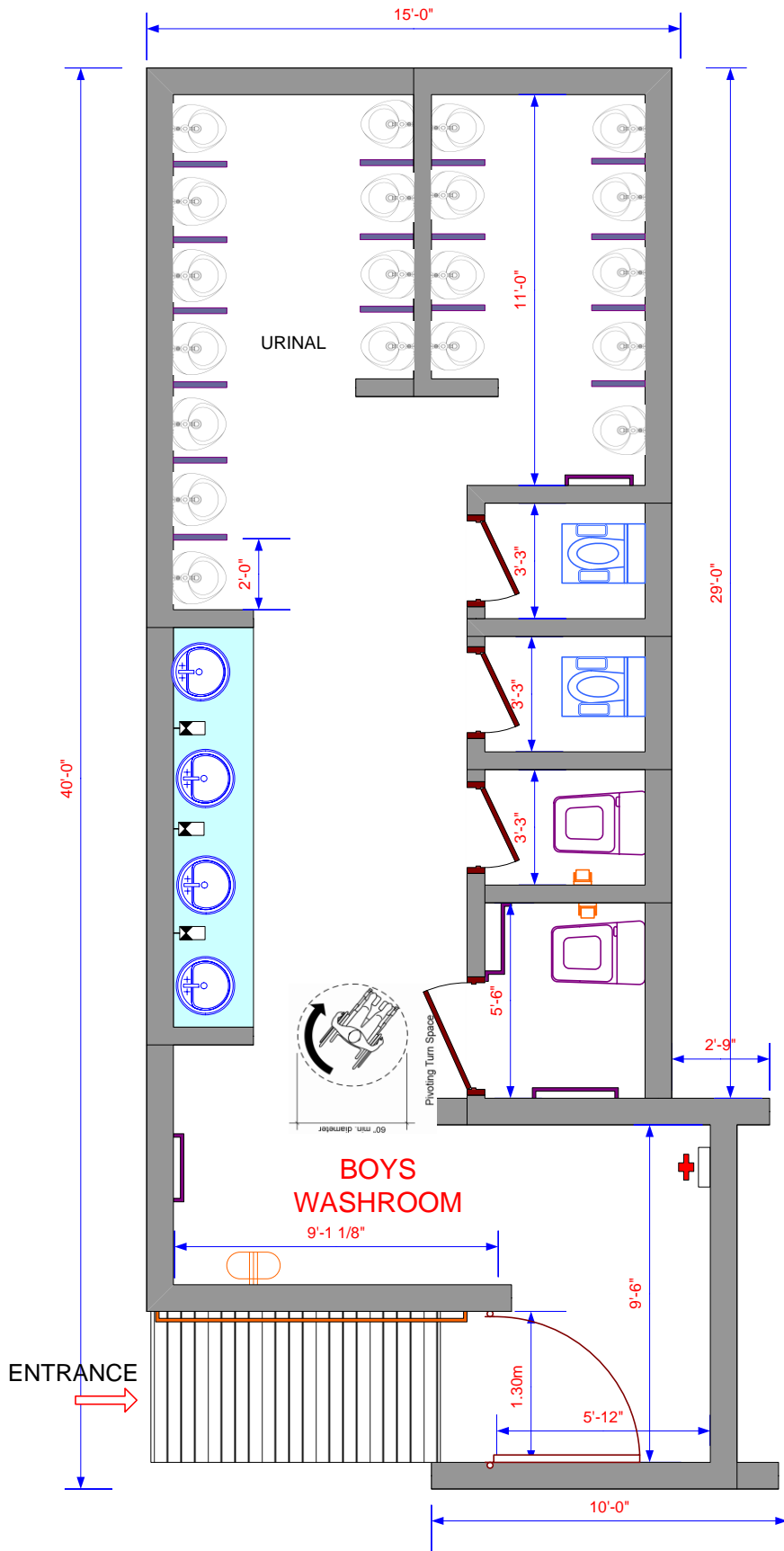




PLAN

SECTION : A-A

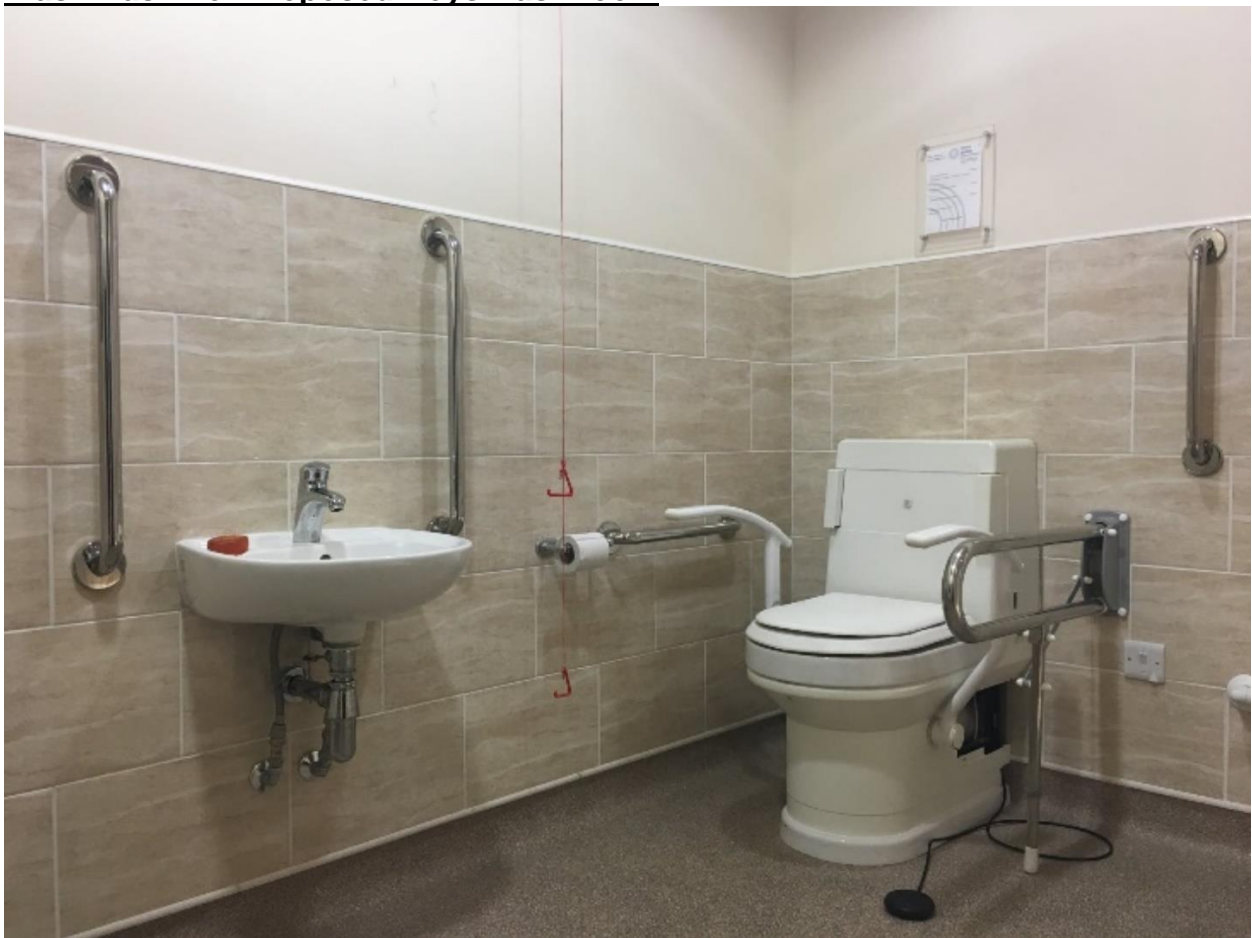
Proposed Lay out Plan of Boys Washroom



(ultra-modern luxury washroom design)



Wash Basin for Proposed Boys wash room



Physical Handicap Person for Proposed wash room



Gents Urinal for Proposed Boys wash room.